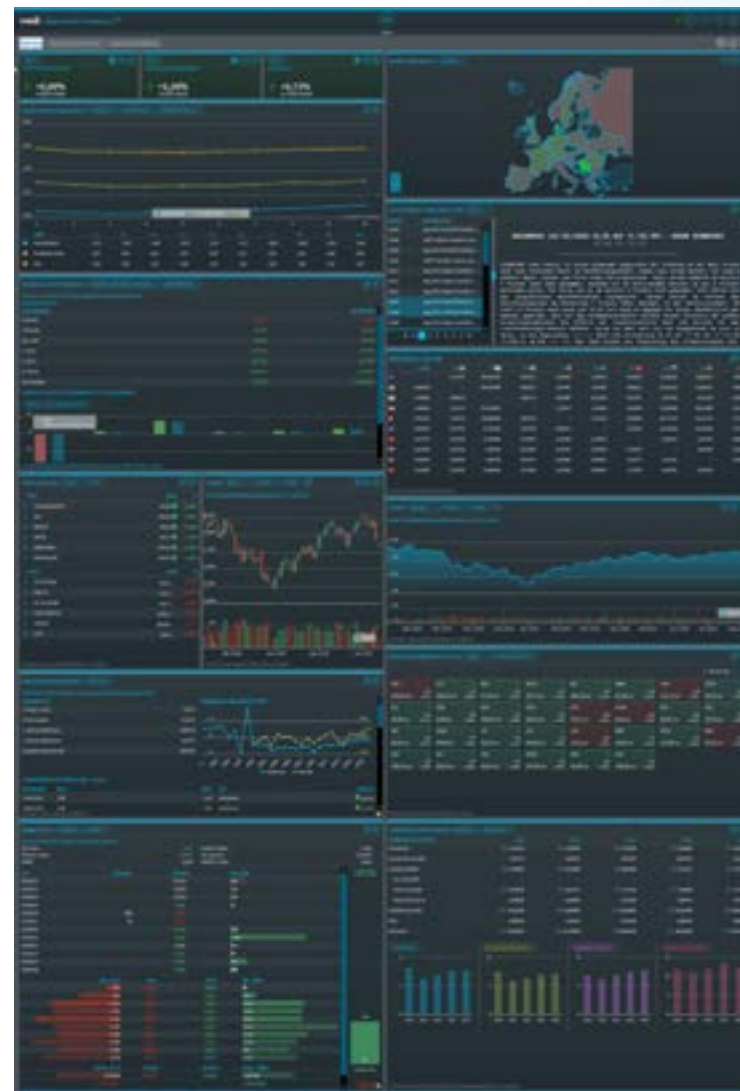


Extensive market data on our cloudbased platform.

Experience the platform with our comprehensive solution designed for your investment process. Investment Manager is a responsive web-based application built with state of the art technology. Take advantage of new features we provide with continuous delivery and enhancements on a regular basis, avoid IT installations and save on your total cost of ownership. Our extensive experience and knowledge of data, analytics, regulatory and portfolio management are available with our cloud solutions.

Investment manager runs in your browser or terminal and on mobile devices, without having to run separate apps for e.g., portfolio management and financial information. With continuous delivery you will always have the most up-to-date features and widgets available. We cover realtime intraday as well as historical (tick) price data with market data widgets, watchlists, portfolios and our widely used navigation pages. Other data packages

include fundamentals, estimates and analytics, macroeconomic and money market data. Choose the specifics of your data and news to suit your individual requirements.





Flexible options to fit your business needs

Modules

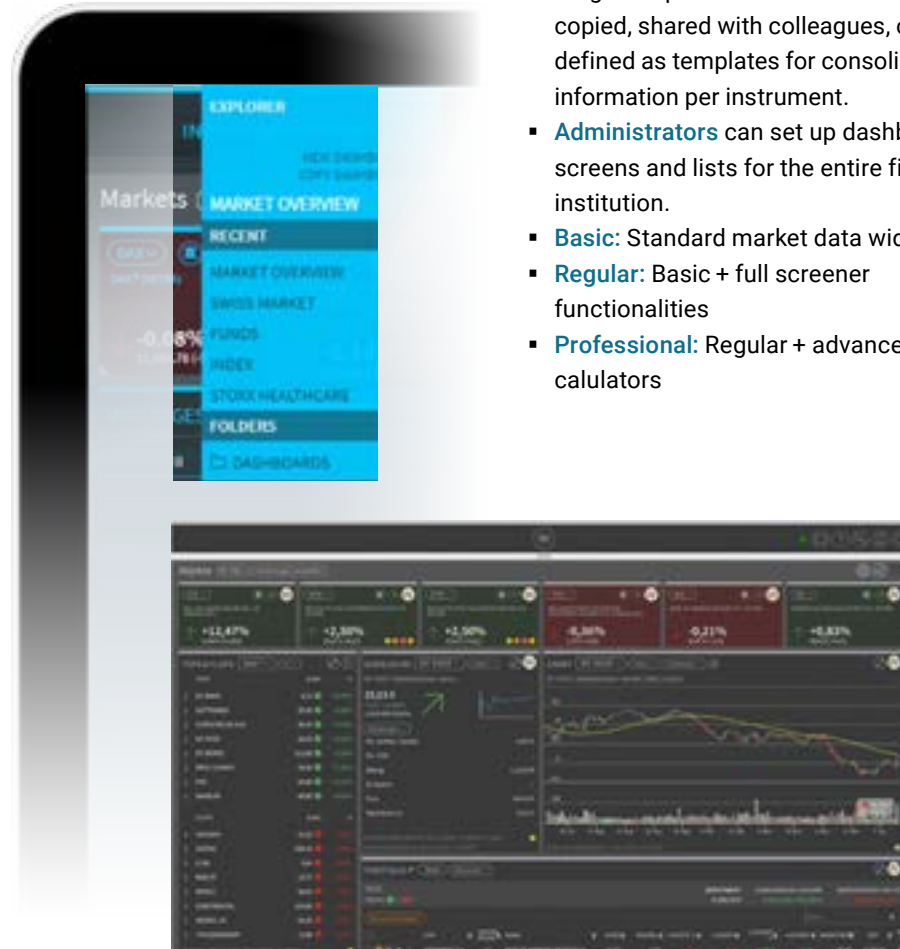
Infront Investment Manager is modular and allows you to access all cloud-based products as well as market data from any of the following modules:

- **Markets:** 70+ easy to use market data widgets for various types of instrument data including quote, news, charting and calculators for instrument valuation. Set up quote and news alerts to monitor instruments in your watchlists and portfolios
- **Screener:** Top-down analysis for all assetclasses, aiding the investment decision process
- **Compass:** Internal recommendations and lists required for the advisory process
- **Portfolio:** Tools to set up and monitor client portfolios including services to enable MiFID compliance
- **Documents:** Regulatory documents for (all) instrument classes available with market leading regulatory solutions

Packages

Various packages are available to accommodate different levels of functionality and content needs. All packages include standard application features:

- **Dashboards:** ability to use preconfigured Dashboards for a particular market view (region, index, asset class) or set them up individually with customized layouts. Quick navigation features include favorites, widget grouping as well as drag & drop. Dashboards can be saved, copied, shared with colleagues, or defined as templates for consolidated information per instrument.
- **Administrators** can set up dashboards, screens and lists for the entire financial institution.
- **Basic:** Standard market data widgets
- **Regular:** Basic + full screener functionalities
- **Professional:** Regular + advanced calculators



Infront Investment Manager offers optional features such as custom themes for white labelling, an Excel plug in as well as optional data packages and exchange data in different data qualities.

Financial professionals across Europe and South Africa rely on Infront for flexible financial market solutions.

Our solutions serve 3,600 customers with over 90,000 professional users. With support for their complete workflow, financial professionals can manage investment decisions, reduce costs, adapt to fast-changing market requirements and work more efficiently with ever-increasing amounts of information – quickly, easily and flexibly.

More than 500 employees in 13 countries across Europe and South Africa apply their expertise to meet the challenges of our clients, ensuring they continuously receive the best solutions and services.